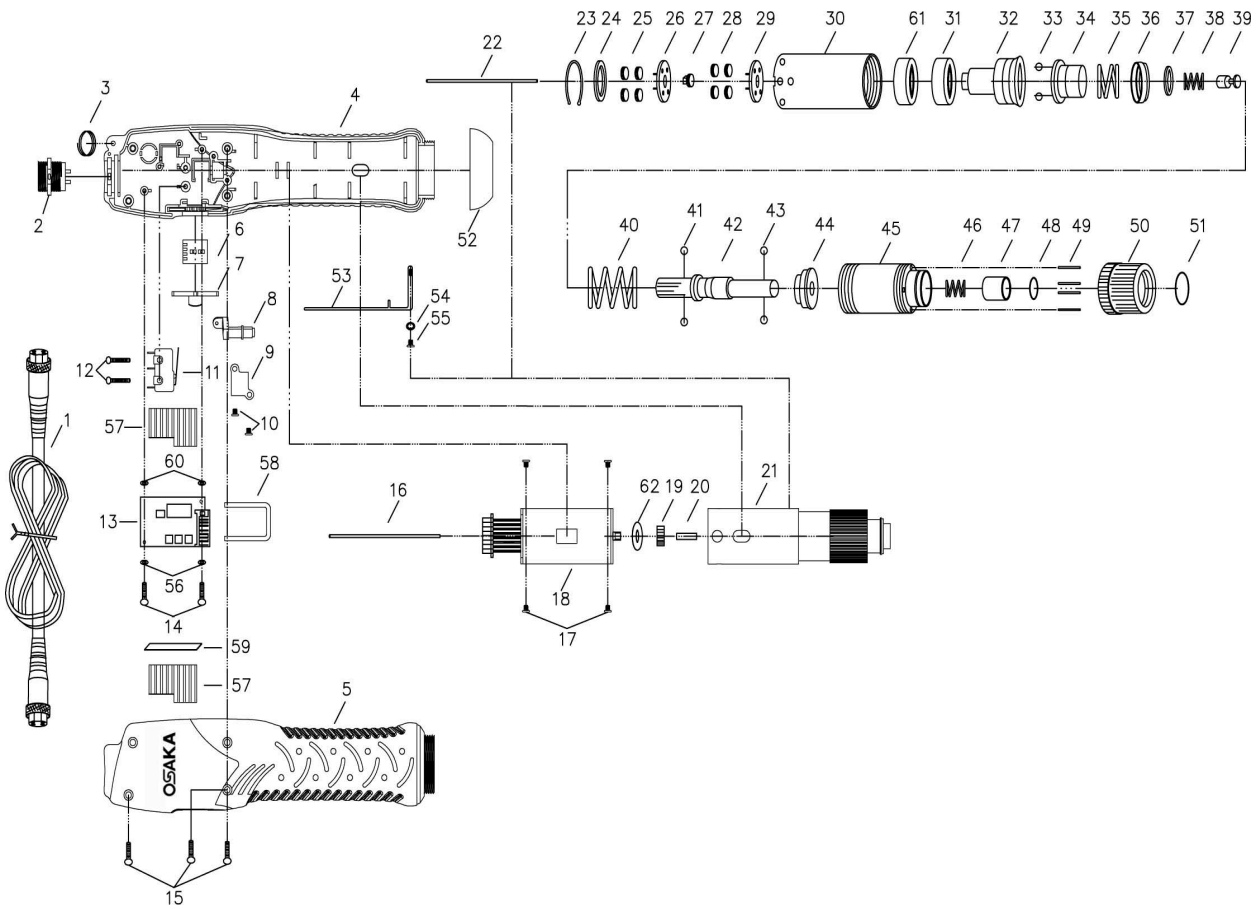


OSAKA BRUSHLESS FULL AUTO SHUT-OFF DC32V, PUSH TO START ELECTRIC SCREWDRIVER OPT-E KTB419P



P-1602F-K2

OSAKA BRUSHLESS FULL AUTO SHUT-OFF DC32V, PUSH TO START ELECTRIC SCREWDRIVER OPT-E KTB412P
OSAKA BRUSHLESS FULL AUTO SHUT-OFF DC32V, PUSH TO START ELECTRIC SCREWDRIVER OPT-E KTB419P

BASDE ON QUOTATION: Q-20080616

PARTS LIST

No.	Parts No.	Description	Q'ty	UNIT PRICE	No.	Parts No.	Description	Q'ty	UNIT PRICE
1	EPAA50001-56N	Cord Assembly 6pin	1	\$43.80	33	EPGP30351	Steel Balls	2	\$0.60
	EPAA50001-139N	Cord Assembly 3m "I/O Signal Control Box"	1	\$159.60	34	EPGF33317	Waring Plate	1	\$16.20
2	EPZ50179-2	Connector Assembly	1	\$42.00		EPG030541	Spring For OPT-E KTB412P	1	\$0.60
3	EPCJ20011-4	Suspension Ring	1	\$0.60		EPG030544	Spring For OPT-E KTB419P	1	\$0.60
4	EPC40738-21F-SNBC-6PN	Housing-Underside-Blue/Black	1	\$0.00	36	EPG030531	Spring Cap	1	\$5.40
	EPC40738-22NF-SNBC-6PN	Housing-Underside (ESD)	1	\$59.40	37	EPGV33316	Inner Spring Cap	1	\$3.00
	EPC450237N	Housing-Upside-Blue/Black	1	\$0.00		EPG033315-2	Inner Spring For OPT-E KTB412P	1	\$0.60
5	EPC450237-1N	Housing-Upside (ESD)	1	\$39.60	38	EPG033315	Inner Spring For OPT-E KTB419P	1	\$0.60
6	EG31421-17F	P.C.B.-Changeover	1	\$19.80	39	EPGU30361	Stop Pilot For OPT-E KTB412P	1	\$10.80
7	EPC150212-1	F/R Switching Element For OPT-E KTB412P	1	\$2.40		EPGU30370	Stop Pilot For OPT-E KTB419P	1	\$10.80
	EPC150212	F/R Switching Element For OPT-E KTB419P	1	\$2.40	40	EPGE30411-18	Wring Spring For OPT-E KTB412P	1	\$4.20
8	EPEC50152-3	Push Rod	1	\$5.40		EPGE30413-8	Wring Spring For OPT-E KTB419P	1	\$4.80
9	EPEC80001	Fixture	1	\$0.60	41	EPGP30371	Steel Balls	2	\$0.60
10	EPC30201-2	Screw For Fixture	2	\$0.60		EPGD33319A	Shaft For 5mm Type (Opt.)	1	\$0.00
11	EPH10201	Shut Off Switch	1	\$9.00		EPGD33319B	Shaft For Hex. 6.35mm Type (Opt.)	1	\$0.00
12	EPCH90151-1	Screw	2	\$0.60	42	EPGD33319B-2	Shaft For Hex. 6.35-89.5mm Type	1	\$66.00
13	EPEG31445-2BN	P.C.B.	1	\$243.60		EPGD33319C	Shaft For 4mm Type (Opt.)	1	\$0.00
14	EPCH90154-1	Screw	2	\$0.60		EPGD33319D	Shaft For 5mm Type (Opt.)	1	\$0.00
	EPCH20510-1	Screw (ESD)	2	\$0.60		EPGD33319AD	Shaft For 5mm & 5mm Type (Opt.)	1	\$0.00
15	EPCH20102	Screw	4	\$0.60	43	EPGP20331	Bit Pilot For Hex. 5mm, 5mm, Hex. 5mm & 5mm Type (Opt.)	2	\$0.00
16	EPMI90302	Pilot Rod	1	\$1.80		EPGP21291B	Bit Pilot For Hex. 6.35mm, 4mm Type	2	\$0.60
17	EPCH20102-24	Screw For Motor	4	\$0.60	44	EPGY33313	Wring Spring Base	1	\$15.60
18	EPM050113CE	Motor Assembly	1	\$396.00	45	EPGB20381-8	Clutch Case For Hex. 5mm, 4mm, 5mm, Hex. 5mm & 5mm Type (Opt.)	1	\$0.00
19	EPM11322-1	Gear	1	\$4.80		EPGB20381-9	Clutch Case For Hex. 6.35mm Type	1	\$30.60
20	EPMG91081	Pilot Rod	1	\$4.80		EPG030452	Bit Spring For OPT-E KTB412P Hex. 5mm, 4mm, 5mm, Hex. 5mm & 5mm Type (Opt.)	1	\$0.00
	EPGZ51902-1A-J	Clutch Assembly For OPT-E KTB412P Hex. 5mm Type (Opt.)	1	\$0.00	46	EPG020391B-J	Bit Spring For OPT-E KTB412P Hex. 6.35mm	1	\$0.60
	EPGZ51902-1B-J	Clutch Assembly For OPT-E KTB412P Hex. 6.35mm Type (Opt.)	1	\$0.00		EPG020391B	Bit Spring For OPT-E KTB419P Hex. 6.35mm	1	\$0.60
	EPGZ51902-5B-J	Clutch Assembly For OPT-E KTB412P Hex. 6.35-89.5mm Type	1	\$297.60	47	EPGJ30461	Bit Sleeve For Hex. 5mm, 4mm, 5mm, Hex. 5mm & 5mm Type (Opt.)	1	\$0.00
	EPGZ51902-1C-J	Clutch Assembly For OPT-E KTB412P 4mm Type (Opt.)	1	\$0.00		EPGJ3046B	Bit Sleeve For Hex. 6.35mm Type	1	\$6.60
	EPGZ51902-1D-J	Clutch Assembly For OPT-E KTB412P 5mm Type (Opt.)	1	\$0.00		EPGQ30471	"C" Ring For Hex. 5mm, 4mm, 5mm, Hex. 5mm & 5mm Type (Opt.)	1	\$0.00
	EPGZ51902-1AD-J	Clutch Assembly For OPT-E KTB419P Hex. 6.35mm Type (Opt.)	1	\$0.00	48	EPGQ21361	"C" Ring For Hex. 6.35mm Type	1	\$0.60
21	EPGZ51902-2A	Clutch Assembly For OPT-E KTB419P Hex. 5mm Type (Opt.)	1	\$0.00	49	EPGL30481-1	Torque Adjust Ring	4	\$0.60
	EPGZ51902-2B	Clutch Assembly For OPT-E KTB419P Hex. 6.35mm Type (Opt.)	1	\$0.00	50	EPGM30491	Torque Adjust Ring	1	\$12.60
	EPGZ51902-5B	Clutch Assembly For OPT-E KTB419P Hex. 6.35-89.5mm Type	1	\$297.60	51	EPGS30501	"C" Ring	1	\$0.60
	EPGZ51902-2C	Clutch Assembly For OPT-E KTB419P 4mm Type (Opt.)	1	\$0.00	52	EPCD28046	Coupler	1	\$0.00
	EPGZ51902-2D	Clutch Assembly For OPT-E KTB419P 5mm Type (Opt.)	1	\$0.00		EPCD28046-1	Coupler (ESD)	1	\$3.60
	EPGZ51902-2AD	Clutch Assembly For OPT-E KTB419P Hex. 5mm, 5mm Type (Opt.)	1	\$0.00	53	EPC50671-3	Grounding Means	1	\$3.00
22	EPMI30241	Pilot Rod	1	\$0.60	54	EPCH20102-8	Washer	1	\$0.60
23	EPGK20231	"C" Ring	1	\$0.60	55	EPCH20514	Screw	1	\$0.60

24	EPGI20251-1	Iron Washer	1	\$0,60	56	EPP11020-1	Insulating Washer (UP) (ESD)	2	\$0,60
25	EPGH20241	Idle Gear	4	\$1,80	57	EPE32204-1	Heat Sink	2	\$5,40
26	EPG20271	Gear Seat	1	\$4,20		EPW50109-2	Clamp	1	\$0,00
27	EPG20101	Central Gear	1	\$3,00	58	EPW50109-4	Clamp (ESD)	1	\$0,60
28	EPGH20241	Idle Gear	4	\$1,80	59	EPW50104-2	Washer	1	\$1,80
29	EPG20271	Gear Seat	1	\$4,20	60	EPP11020-4	Insulating Washer (Down) (ESD)	2	\$0,60
30	EPGA91284	Gear Case	1	\$52,80	61	EPGN30435	Main Bearing	1	\$3,00
31	EPGN30321	Main Bearing	1	\$6,60	62	EPW10201-1	Insulating Washer	1	\$0,60
32	EPGX3319-4	Shaft Guide	1	\$85,80					\$0,00