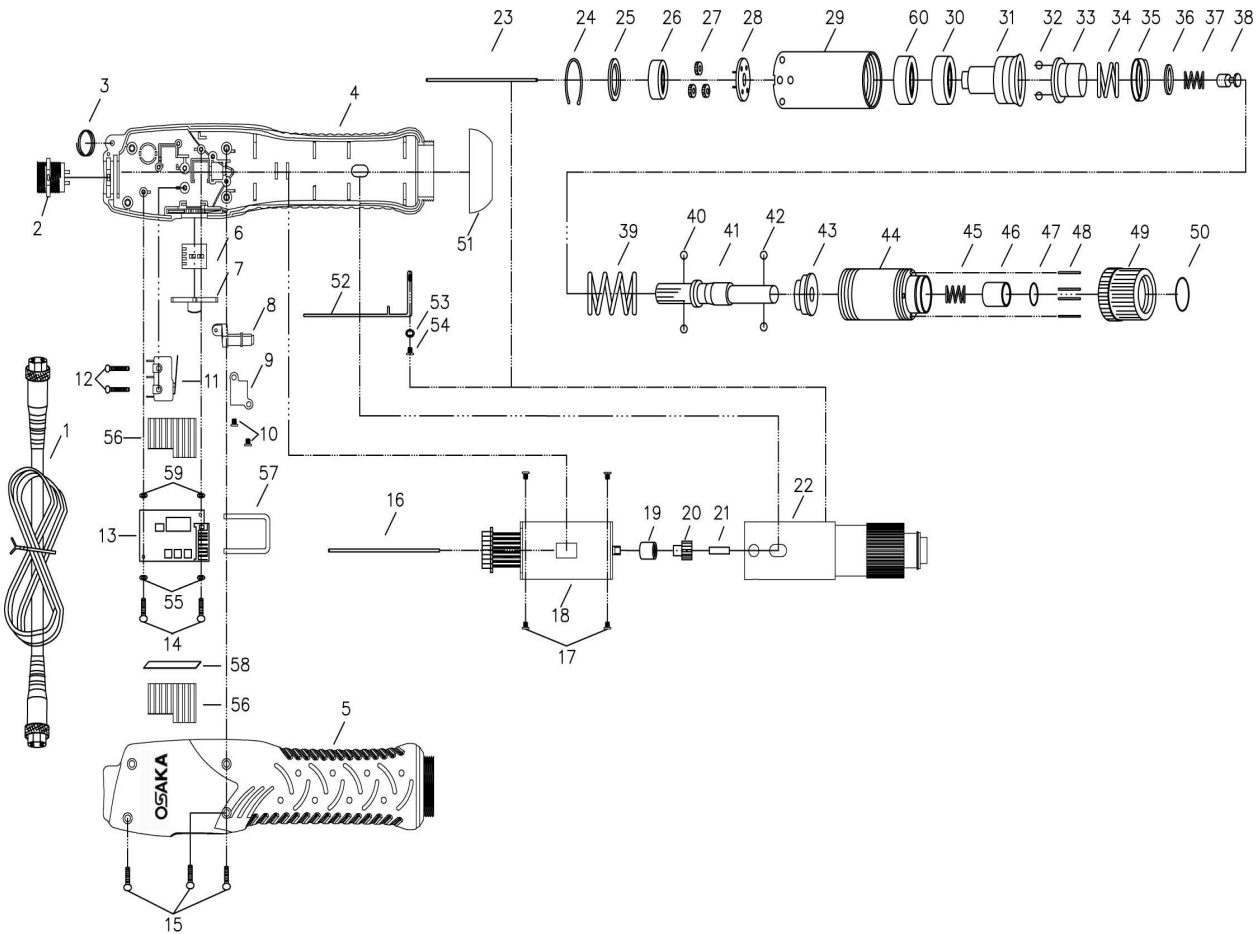


OSAKA BRUSHLESS FULL AUTO SHUT-OFF DC32V, PUSH TO START, HIGH SPEED ELECTRIC SCREWDRIVER OPT-E-KTB417PY



OSAKA BRUSHLESS FULL AUTO SHUT-OFF DC32V, PUSH TO START, HIGH SPEED ELECTRIC SCREWDRIVER OPT-E-KTB412PY

OSAKA BRUSHLESS FULL AUTO SHUT-OFF DC32V, PUSH TO START, HIGH SPEED ELECTRIC SCREWDRIVER OPT-E-KTB417PY

BASDE ON QUOTATION: Q-20080618

PARTS LIST

No.	Parts No.	Description	Q'ty	UNIT PRICE	No.	Parts No.	Description	Q'ty	UNIT PRICE
1	EPA40001-56A	Cord Assembly (opt)	1	\$43.80	32	EPGF30351	Steel Balls	2	\$0.60
	EPA40001-56B	1	\$159.60	33	EPGF33317	Waring Plate	1	\$16.20
2	EPPZ50179-2	Control Assembly	1	\$42.00		EPG030541	1	\$0.60
3	EPCJ20011-4	Suspension Ring	1	\$0.60	34	EPG030544	1	\$0.60
4	EPG40124-01-080C-07A	Housing (Motor Side) (ESD)	1	\$0.00	35	EPG030531	Spring Cap	1	\$5.40
	EPG40124-02-080C-07A	Housing (Motor Side) (ESD)	1	\$59.40	36	EPGV33316	Inner Spring Cap	1	\$3.00
5	EPCA50237N	Housing (Control Side)	1	\$0.00	37	EPG033315-2	1	\$0.60
	EPCA50237-1N	Housing (Control Side) (ESD)	1	\$39.60		EPG033315	1	\$0.60
6	EPES31421-17F	P.C.B. Charge	1	\$19.80	38	EPGU30370	Stop Pilot	1	\$10.80
7	EPC150212-1	FR Switching Element	1	\$2.40	39	EPGE301118	1	\$4.20
8	EPCE50152-3	Push Rod	1	\$5.40		EPGE30415-5	1	\$5.40
9	EPCE80001	Fixture	1	\$0.60	40	EPGP30371	Steel Balls	2	\$0.60
10	EPC430201-2	Screw For Fixture	2	\$0.60		EPGD33319A	1	\$0.00
11	EPH10201	Shut Off Switch	1	\$9.00		EPGD33319B	1	\$0.00
12	EPC490151-1	Screw	2	\$0.60	41	EPGD33319B-2	1	\$66.00
13	EPES31445-29N	P.C.B.	1	\$243.60		EPGD33319C	1	\$0.00
14	EPC490154-1	Screw	2	\$0.00		EPGD33319D	1	\$0.00
	EPC405010-1	Screw (ESD)	2	\$0.60		EPGD33319AD	1	\$0.00
15	EPC420102	Screw	4	\$0.60	42	EPGP20331	2	\$0.00
16	EPM190302	Pilot Rod	1	\$1.80		EPGP21291B	2	\$0.60
17	EPC420102-24	Screw For Motor	4	\$0.60	43	EPGY33313	Wiring Spring Base	1	\$16.20
18	EPMD05014CE	Motor Assembly	1	\$396.00	44	EPGB20381-8	1	\$0.00
19	EPMD102-1	Gear Coupler	1	\$7.80		EPGB20381-9	1	\$30.60
20	EPM11324	Gear	1	\$7.80		EPGB30452	1	\$0.00
21	EPMG30381-1	Pilot Rod	1	\$6.00	45	EPGQ20381B-J	1	\$0.60
	EPGZ51902-3A-U	1	\$0.00		EPGQ20381B	1	\$0.60
	EPGZ51902-3B-U	1	\$0.00	46	EPGJ30461	1	\$0.00
	EPGZ5190	1	\$304.80		EPGJ3046B	1	\$6.60
	EPGZ51902-3C-U	1	\$0.00		EPGQ30471	1	\$0.00
	EPGZ51902-3D-U	1	\$0.00	47	EPGQ21361	1	\$0.60
	EPGZ51903-3A-U	1	\$0.00	48	EPGL30481-1	Torque Adjust Plug	4	\$0.60
	EPGZ51903-3B	1	\$0.00	49	EPGM30491	Torque Adjust Ring	1	\$12.60
	EPGZ51903-3C	1	\$0.00	50	EPGS30501	"C" Ring	1	\$0.60
	EPGZ5190	1	\$304.80	51	EPCD29046	Coupler	1	\$0.00
	EPGZ51904-3C	1	\$0.00		EPCD29046-1	Coupler (ESD)	1	\$3.60
	EPGZ51904-3D	1	\$0.00	52	EPC450671-3	Grounding Means	1	\$3.00

	EPG251904-3AD	-----	1	\$0.00	53	EPCH20102-8	Washer	1	\$0.60
23	EPMI30241	Pilot Rod	1	\$0.60	54	EPCH20514	Screw	1	\$0.60
24	EPGK20231	*C* Ring	1	\$0.60	55	EPP11020-1		2	\$0.60
25	EPG20251-1	Iron Washer	3	\$0.60	56	EPF32204-1	Heat Sink	2	\$5.40
26	EPG21302	Spacer	1	\$4.20		EPW50109-2	Clamp	1	\$0.00
27	EPG20241-1	Idle Gear	1	\$4.20	57	EPW50109-4	Clamp (ESD)	1	\$0.60
28	EPG20271-1	Gear Seat	1	\$12.00	58	EPW50104-2	Washer	1	\$1.80
29	EPGA91284-1	Gear Case	1	\$59.40	59	EPP11020-4		2	\$0.60
30	EPGN30321	Main Bearing	2	\$6.60	60	EPGN30435	Main Bearing	1	\$3.00
31	EPG33319-4	Shaft Guide	1	\$86.40					