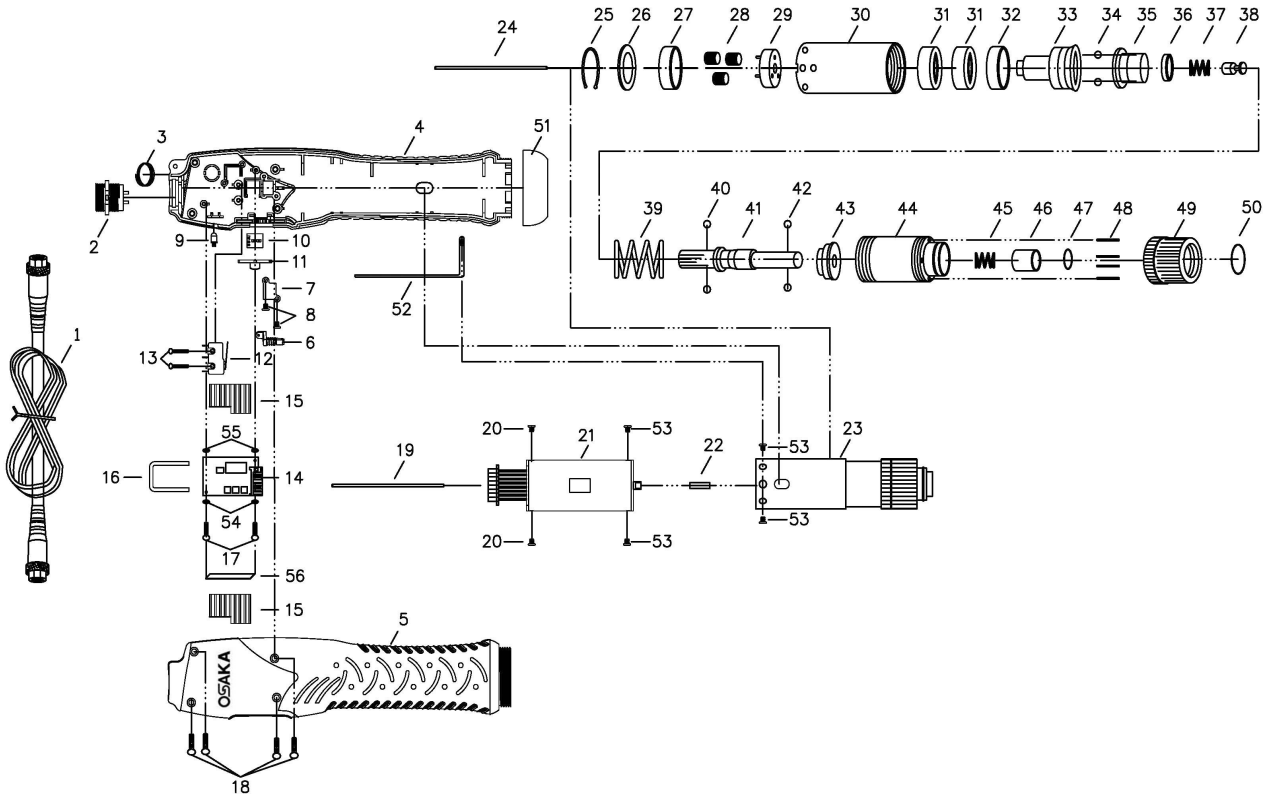


OSAKA BRUSHLESS FULL AUTO SHUT-OFF DC40V, PUSH TO START, HIGH SPEED ELECTRIC SCREWDRIVER OPT-E KTB630PY



OSAKA BRUSHLESS FULL AUTO SHUT-OFF DC40V, PUSH TO START, HIGH SPEED ELECTRIC SCREWDRIVER OPT-E KTB630PY

BASED ON QUOTATION: Q-20080420

PARTS LIST

No.	Parts No.	Description	Q'ty	Unit Price	No.	Parts No.	Description	Q'ty	Unit Price
1	EPAAS0001-56N	Cord Assembly 2m "General Bn" Type	1	\$43.80	27	EPG21304	Washer (High Speed)	1	\$5.40
	EPAAS0001-139N	Cord Assembly 3m "IO Signal Control Box" Type	1	\$158.40	28	EPGH92239	Idle Gear	3	\$7.80
2	EPPZ50190	Connector Assembly	1	\$45.60	29	EPGG21515	Gear Seat	1	\$19.80
3	EPCJ20011-4	Suspension Ring	1	\$0.60	30	EPGA81101	Gear Case	1	\$72.00
4	EPC40743-15F-SNBC-6PN	Housing-Underside Assembly	1	\$0.00	31	EPGN21251	Main Bearing	2	\$7.80
	EPC40743-16NF-SNBC-6PN	Housing-Underside Assembly (ESD)	1	\$61.20	32	EPGW21532	Iron Ring	1	\$4.20
5	EPCA80103	Housing-Upside	1	\$0.00	33	EPGX90305-2	Cam	1	\$105.60
	EPCA80103-1N	Housing-Upside (ESD)	1	\$46.20	34	EPGF90361	Steel Balls Φ5	3	\$0.60
6	EPCES0152-7	Push Rod	1	\$5.40	35	EPGF90322	Waring Plate	1	\$26.40
7	EPCE80001	Fixture	1	\$0.60	36	EPGV90331	Spring Cap	1	\$3.00
8	EPCH30200	Screw For Fixture	2	\$0.60	37	EPG090341	Inner Spring	1	\$0.60
9	EPE31105-1	Led	1	\$3.60	38	EPGU90370	Stop Pilot	1	\$10.80
10	EPG31421-17F	P.C.B.-Changeover	1	\$19.80	39	EPGE92389-1	Waring Spring	1	\$6.00
11	EPIC50212-1	F/R Switching Element	1	\$2.40	40	EPGP90351	Steel Balls Φ4	2	\$0.60
12	EPH10201	Shut Off Switch	1	\$9.60		EPGD91402A	Shaft For Hex. 5mm Type (Opt.)	1	\$0.00
13	EPCH90151-1	Screw For Shut Off Switch	2	\$0.60	41	EPGD91402B	Shaft For Hex. 6.35mm Type (Opt.)	1	\$0.00
14	EPEG31445-4BN	P.C.B.	1	\$356.40		EPGD91402B-2	Shaft For Hex. 6.35mm-B9.5 Type	1	\$79.20
15	EPE32204-1	Heat Sink	2	\$0.00	42	EPGP21291A	Steel Balls Φ3 For Hex. 5mm Type (Opt.)	2	\$0.00
	EPE32204-2	Heat Sink (ESD)	2	\$8.40		EPGP21291B	Steel Balls Φ2.5 For Hex. 6.35mm Type	2	\$0.60
16	EPW50109-4	Clamp	1	\$0.00	43	EPGY21321	Waring Spring Base	1	\$17.40
	EPW50109-5	Clamp (ESD)	1	\$0.00	44	EPGB30443-1	Clutch Case Assembly	1	\$85.80
17	EPCH90154	Screw	2	\$0.00	45	EPG021341-1	Bit Spring	1	\$0.60
	EPCH20510	Screw (ESD)	2	\$0.60	46	EPGJ21351	Bit Sleeve	1	\$6.60
18	EPCH20102	Screw For Housing	4	\$0.60	47	EPGQ21361	"C" Ring	1	\$0.60
19	EPM90583	Pilot Rod	1	\$1.80	48	EPGL21371	Torque Adjust Pin	4	\$0.60
20	EPCH20102-24	Screw	2	\$0.60	49	EPGM21381	Torque Adjust Ring	1	\$19.80
21	EPM080030CE	Motor Assembly	1	\$426.00	50	EPGS21391	"C" Ring	1	\$0.60
22	EPMG30081-2	Pilot Rod	1	\$6.00		EPGD91035	Coupler	1	\$0.00
	EPGZ83002-3A	Clutch Assembly For OPT-E KTB630PY Hex. 5mm (Opt.)	1	\$0.00	51	EPGD91035-1	Coupler (ESD)	1	\$5.40
23	EPGZ83002-3B	Clutch Assembly For OPT-E KTB630PY Hex. 6.35mm	1	\$0.00	52	EPCH30674-1	Grounding Means	1	\$3.00
	EPGZ83002-6B	Clutch Assembly For OPT-E KTB630PY Hex. 6.35mm-B9.5	1	\$528.00	53	EPCH20504-18	Screw	4	\$0.60
24	EPMI90511-4	Pilot Rod	1	\$2.40	54	EPP11020-4	Insulating Washer-Up (ESD)	2	\$0.60
25	EPGK21181	"C" Ring	1	\$0.60	55	EPP11020-4	Insulating Washer-Down (ESD)	2	\$0.60
26	EPGJ21191	Iron Washer	1	\$0.60	56	EPW50104-2	Gasket	1	\$1.80