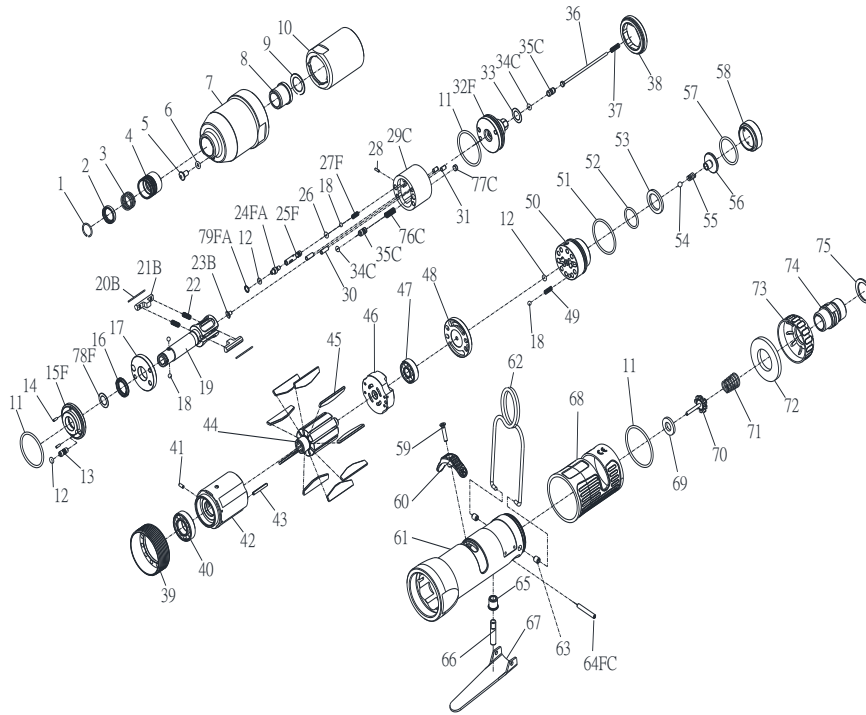


# IMPULSE EXPLODING VIEW (OPC 45106)



Edition:OC

Index No.	Part No.	Description	Q'ty	USD	Index No.	Part No.	Description	Q'ty	USD
1	757-026	Anvil Collar	1	0,7	45	I40S-304	Rotor Blade	9	10,85
2	I40SD-419	Hold Spacer	1	3,5	46	I40S-305	Rear Plate	1	52,85
3	I40SD-418	Spring	1	2,8	47	00-2356	Ball Bearing	1	14,35
4	I40SD-417	Quick Change Hold	1	7,35	48	I40S-310	Air Inlet Plate	1	23,45
5	I100-410	Greasing Screw	1	0,7	49	305F-034	Spring	1	0,7
6	00-4153	O-Ring(φ3xφ1.5)	1	0,7	50	IS40S-502	F/R Valve	1	42
7	I40S-201	Pulse Unit Housing	1	45,85	51	00-41146	O-Ring(φ21xφ1.5)	1	0,7
8	I40S-202	Bushing	1	17,15	52	00-4121	O-Ring(φ15xφ1.5)	1	0,7
9	I40S-424	Washer	1	1,4	53	IS40S-312	Valve Washer	1	9,1
10	I40S-401	Pulse Cylinder Seat	1	32,2	54	00-3824	Steel Ball	1	0,7
11	00-41127	O-Ring(φ27xφ1.5)	3	0,7	55	IS40S-313	Spring	1	1,4
12	00-41113	O-Ring(φ2xφ1.5)	3	0,35	56	IS40S-311	Valve	1	8,75
13	I70-410	Greasing Screw	1	2,1	57	00-41125	O-Ring(φ20.35xφ1.78)	1	0,7
14	00-3318	Spring Pin	2	0,7	58	I40S-309	Seat	1	15,4
15F	I40S-403-B	Front Cover	1	30,45	59	00-0507	Screw	1	0,7
16	00-2602	X-Ring	1	8,75	60	I40S-503	Regulator Knob	1	1,75
17	I40S-408	Front Plate	1	36,4	61	I40S-101	Motor Housing	1	201,6
18	00-3813	Steel Ball	4	0,35	62	I40S-102	Hanger	1	8,75
19	I40SD-405	Anvil	1	96,6	63	I40S-108	Bushing	2	#VALUE!
20B	I40S-452	Roller	2	8,05	64FC	00-3302	Spring Pin	1	0,7
21B	I40S-406-B	Drive Blade	2	60,55	65	I40S-509	Bushing	1	3,85
22	I40S-407	Spring	2	2,1	66	IS40S-510	Pin	1	3,5
23B	IS40-450	Block Valve	1	8,75	67	I40S-504	Trigger	1	1,4
24FA	I80-411	Valve Screw	1	5,25	68	I40S-103	Housing Rubber	1	5,95
25F	IS40S-412-C	Valve	1	12,6	69	I40S-508	Bushing	1	1,4
26	00-41130	O-Ring(φ2xφ1)	1	0,7	70	305C-021	Valve Stem	1	1,4
27F	IS40SD-425-C	Spring	1	1,4	71	I40S-507	Spring	1	1,4
28	00-3436	Pin	1	1,4	72	I40S-601	Muffler	1	4,55
29C	I40S-404-B	Pulse Cylinder	1	188,7	73	I40S-603	Exhaust Deflector	1	1,75
30	00-3435	Pin	2	1,4		I40S-604A	Air Inlet 1/4" PF		0

31	00-3407	Pin	2	1,05	74	I40S-604B	Air Inlet 1/4"PT	1	17,15
32F	IS40S-415-C	Rear Plate	1	96,95		I40S-604C	Air Inlet 1/4"NPT		0
33	I40S-423	Washer	1	1,05	75	00-3509	Snap Ring	1	0,7
34C	00-41173	O-Ring( $\phi$ 1.42x $\phi$ 1.53)	2	0,35	76C	I40S-453	Spring	1	1,4
35C	IS40S-421	Pressure Valve	2	10,15	77C	I40S-454	Block Cap	1	2,8
36	IS40S-314	Shut Off Stem	1	11,2	78F	I40-409	Back Up Ring	1	3,85
37	IS40S-317	Spring	1	1,4	79FA	I80-422	Back Up Ring	1	2,45
38	I40S-402	Lock Nut	1	10,15	$\emptyset$	IS40SDRK	Repair kit :Index No-		22,05
39	I40S-306	Lock Nut	1	26,6			11(2);12(2);16;22(2);34C(2);78F		0
40	00-2348	Ball Bearing	1	26,95	$\emptyset$	IS40SDSK	Service kit :Index No-		468,65
41	00-3324	Spring Pin	1	0,7			17;19;20B(2);21B(2);32F;		0
42	I40S-302	Cylinder	1	135,1			45(9);55;69;70;71		0
43	00-3326	Spring Pin	1	0,7	$\emptyset$	01-0508B	Impulse Oil(100c.c)		35
44	I40S-303	Rotor	1	63	$\emptyset$	01-0507B	Impulse Oil(1000c.c)		315
★Pulse unit includes:Index No :									845,25
10,11,12,13,14,15F,16,17,18,19,20B,21B,22,23B,24FA,25F,26,27F,28,29C,30,31,32F,34C,35C,38,76C,77C,78F,79FA									