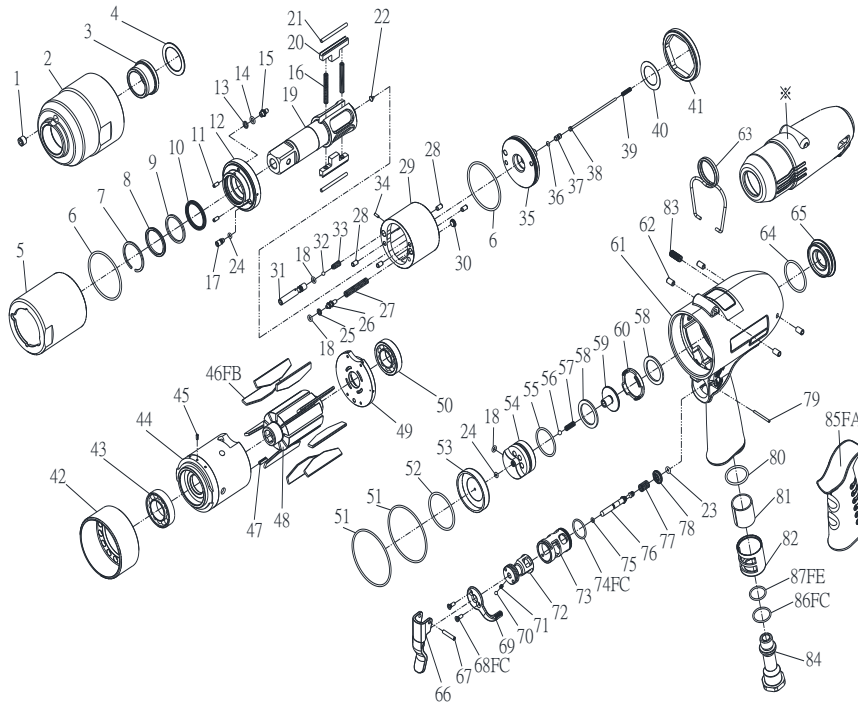


IMPULSE EXPLODING VIEW (OPC 53210)



Edition:06E

Index No.	Part No.	Description	Q'ty	USD	Index No.	Part No.	Description	Q'ty	USD
1	00-0612	Screw	1	1,4	50	00-2353	Ball Bearing (16003)	1	44,1
2	I150-201	Pulse Unit Housing	1	97,3	51	00-41200	O-Ring (Ø 57x Ø2)	2	2,45
3	I150-202	Bushing	1	33,25	52	00-4171	O-Ring (Ø 36x Ø2)	1	1,4
4	I150-424	Washer	1	1,75	53	IS150-307	Rear Cover	1	17,85
5	I150-401	Pulse Cylinder Seat	1	70	54	IS130-524	Valve Seat	1	47,25
6	00-41198	O-Ring(Ø 47.5x Ø2)	2	1,05	55	00-41138	O-Ring(Ø 28.3x Ø1.78)	1	0,7
7	I150-458	Snap Ring	1	1,75	56	00-3824	Steel Ball(Ø 4)	1	0,7
8	I150-457	Washer	1	9,1	57	IS130-313	Spring	1	1,4
9	I150-409	Back-Up Ring	1	4,55	58	IS130-312	Washer	2	12,25
10	00-2605	X-Ring	1	8,75	59	IS130-311	Valve	1	12,25
11	00-3426	Pin(Ø 3x 7L)	2	1,4	60	IS130-518	Seat	1	17,85
12	I150-408	Front Plate	1	62,65	61	IS150-101	Motor Housing	1	282,1
13	I150-431	Back-Up Ring	1	1,75	62	00-3353	Spring Pin(Ø 5x 8L)	4	0,7
14	00-41156	O-Ring(Ø 3.5x Ø1.5)	1	0,35	63	I40S-102	Hanger	1	8,75
15	I150-411	Valve Screw	1	3,15	64	00-41194	O-Ring(Ø 30x Ø2)	1	1,05
16	I150-407	Spring	2	2,1	65	I130-104	Nut	1	14,35
17	I150-410	Greasing Screw	1	3,15	66	I150-504	Trigger	1	6,3
18	00-41178	O-Ring(Ø 2.5x Ø1.5)	3	0,35	67	00-3308	Spring Pin(Ø 3x 18L)	1	0,7
19	I150-405	Anvil	1	184,1	68FC	00-0512	Screw(M3x8L)	2	0,7
20	I150-406	Drive Blade	2	91,35	69	I150-503	Regulator Knob	1	15,4
21	I150-452	Roller	2	8,75	70	00-3813	Steel Ball(Ø 1/8")	1	0,35
22	IS40-450	Block Valve	1	8,4	71	I100-506	Spring	1	1,4
23	00-41199	O-Ring(Ø 1.8x Ø1.9)	1	0,7	72	IS150-502	F/R Valve	1	23,1
24	00-41113	O-Ring(Ø 2x Ø1.5)	2	0,35	73	I150-501	Valve Sleeve	1	22,05
25	I150-459	Back-Up Ring	1	1,75	74FC	00-41145	O-Ring(Ø 18x Ø1.5)	2	0,7
26	I150-455	Valve	1	7,7	75	00-4101	O-Ring(Ø 3x Ø1)	1	0,7
27	I150-453	Spring	1	1,75	76	IS150-505	Valve Stem	1	9,8
28	00-3432	Pin(Ø 4x 7L)	4	1,4	77	I150-507	Spring	1	1,4
29	I150-404	Pulse Cylinder	1	290,5	78	I150-508	Bushing	1	5,6
30	I150-454	Block Cap	1	5,25	79	00-3427	Pin(Ø2x 25L)	1	1,75
31	IS150-412	Valve	1	11,2	80	00-41203	O-Ring(Ø 19x Ø2)	1	1,05
32	00-3829	Steel Ball(Ø 3.5)	1	0,7	81	I150-601	Muffler	1	4,55

33	IS150-425	Spring	1	1,4	82	I150-603	Exhaust Deflector	1	12,95
34	00-3428	Pin(Ø2x 6L)	1	1,4	83	IS100-609	Screw	1	4,2
35	IS150-415	Rear Plate	1	139,65		I150-604A	Air Inlet 1/4"-19PF		0
36	00-41173	O-Ring(Ø 1.5x Ø1.5)	1	0,35	84	I150-604B	Air Inlet 1/4"-19PT	1	32,2
37	IS40S-421	Pressure Valve	1	10,15		I150-604C	Air Inlet 1/4"-18NPT		0
38	IS130-314	Shut Off Stem	1	11,9	85FA	I150-103	Housing Rubber	1	23,1
39	IS150-317	Spring	1	1,4	86FC	00-41244	O-ring(Ø 19x Ø1.5)	1	1,05
40	I150-423	Washer	1	2,45	87FE	00-4157	O-Ring(Ø 10x Ø1.5)	1	0,7
41	I150-402	Lock Nut	1	16,8	Ø	I150-109	Tool Cover		50,05
42	I150-306	Lock Nut	1	55,65	Ø	IS150RK	Repair kit :Index No-		27,3
43	00-2354	Ball Bearing (6904)	1	36,05			6(2);9;10;13;14;16(2);		0
44	I150-302	Cylinder	1	239,05			18;24;25;36		0
45	00-3324	Spring Pin(Ø2x 5L)	1	0,7	Ø	IS150SK	Service kit :Index No-		715,4
46FB	I130-304	Rotor Blade	9	8,05			12;19; 20(2);21(2);23;		0
47	00-3361	Spring Pin(Ø3.5x 10L)	1	0,7	Ø		35;46FB(9);57;77;78		0
48	I150-303	Rotor	1	162,4	Ø	01-0507	Impulse Oil (1000c.c)		315
49	I150-305	Rear Plate	1	79,8	Ø	01-0508	Impulse Oil (100c.c)		35
★ Pulse unit includes: Index No : 5,6,7,8,9,10,11,12,13,14,15,16,17,18,19,20,21,22,24,25,26,27,28,29,30,31,32,33,34,35,36,37,41									1202,6
									0