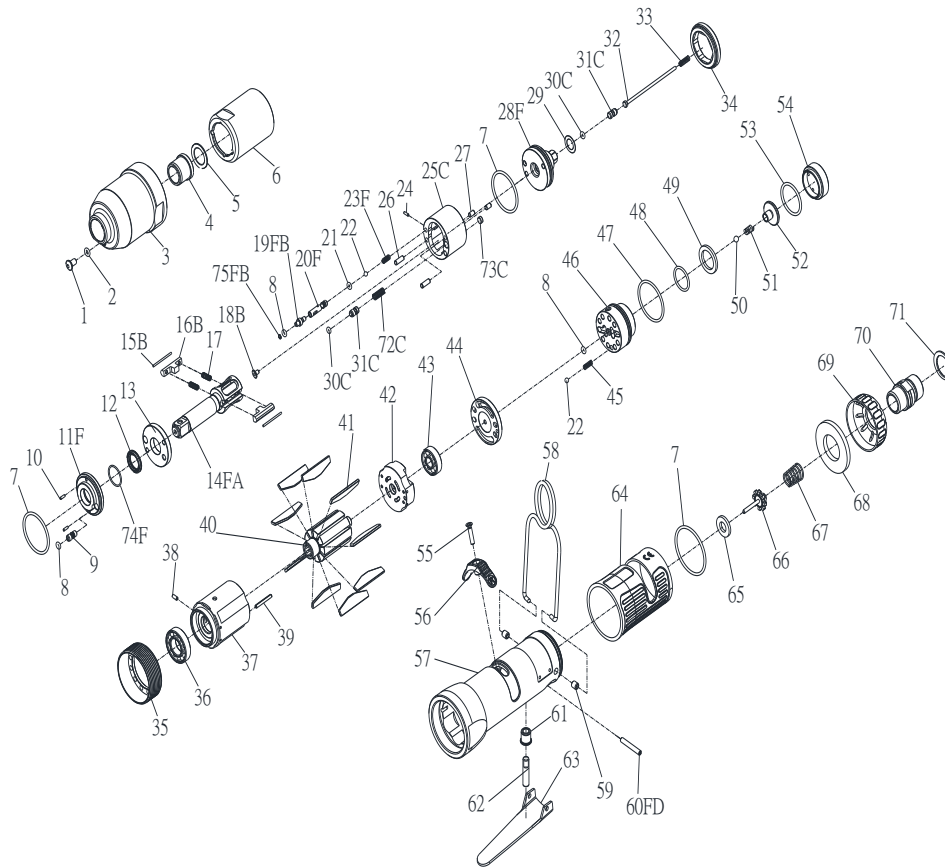


IMPULSE EXPLODING VIEW (OPC 57024)



Edition:06D

Index No.	Part No.	Description	Q'ty	USD	Index No.	Part No.	Description	Q'ty	USD
1	I100-410	Greasing Screw	1	0,7	43	00-2356	Ball Bearing	1	14,35
2	00-4153	O-Ring(φ3xφ1.5)	1	0,7	44	I40S-310	Air Inlet Plate	1	23,45
3	I40S-201	Pulse Unit Housing	1	45,85	45	305F-034	Spring	1	0,7
4	I40S-202	Bushing	1	17,15	46	IS40S-502	F/R Valve	1	42
5	I40S-424	Washer	1	1,4	47	00-41146	O-Ring (φ21xφ1.5)	1	0,7
6	I40S-401	Pulse Cylinder Seat	1	32,2	48	00-4121	O-Ring (φ15xφ1.5)	1	0,7
7	00-41127	O-Ring(φ27xφ1.5)	3	0,7	49	IS40S-312	Valve Washer	1	9,1
8	00-41113	O-Ring(φ2xφ1.5)	3	0,35	50	00-3824	Steel Ball	1	0,7
9	I70-410	Greasing Screw	1	2,1	51	IS40S-313	Spring	1	1,4
10	00-3318	Spring Pin	2	0,7	52	IS40S-311	Valve	1	8,75
11F	I40S-403-B	Front Cover	1	30,45	53	00-41125	O-Ring(φ20.35xφ1.78)	1	0,7
12	00-2602	X-Ring	1	8,75	54	I40S-309	Seat	1	15,4
13	I40S-408	Front Plate	1	36,4	55	00-0507	Screw	1	0,7
14FA	IS40S-405-B	Anvil	1	87,5	56	I40S-503	Regulator Knob	1	1,75
15B	I40S-452	Roller	2	8,05	57	I40S-101	Motor Housing	1	201,6
16B	I40S-406-B	Drive Blade	2	60,55	58	I40S-102	Hanger	1	8,75
17	I40S-407	Spring	2	2,1	59	I40S-108	Bushing	2	#VALUE!
18B	IS40-450	Block Valve	1	8,75	60FD	00-3302	Spring Pin	1	0,7
19FB	I80-411	Valve Screw	1	5,25	61	I40S-509	Bushing	1	3,85
20F	IS40S-412-C	Valve	1	12,6	62	IS40S-510	Pin	1	3,5
21	00-41130	O-Ring(φ2xφ1)	1	0,7	63	I40S-504	Trigger	1	1,4
22	00-3813	Steel Ball	2	0,35	64	I40S-103	Housing Rubber	1	5,95
23F	IS50S-425-C	Spring	1	1,4	65	I40S-508	Bushing	1	1,4
24	00-3436	Pin	1	1,4	66	305C-021	Valve Stem	1	1,4
25C	I40S-404-B	Pulse Cylinder	1	188,7	67	I40S-507	Spring	1	1,4
26	00-3435	Pin	2	1,4	68	I40S-601	Muffler	1	4,55

27	00-3407	Pin	2	1,05	69	I40S-603	Exhaust Deflector	1	1,75
28F	IS40S-415-C	Rear Plate	1	96,95		I40S-604A	Air Inlet 1/4"PF		0
29	I40S-423	Washer	1	1,05	70	I40S-604B	Air Inlet 1/4"PT	1	17,15
30C	00-41173	O-Ring(ϕ 1.42x ϕ 1.53)	2	0,35		I40S-604C	Air Inlet 1/4"NPT		0
31C	IS40S-421	Pressure Valve	2	10,15	71	00-3509	Snap Ring	1	0,7
32	IS40S-314	Pin	1	11,2	72C	I40S-453	Spring	1	1,4
33	IS40S-317	Spring	1	1,4	73C	I40S-454	Block Cap	1	2,8
34	I40S-402	Lock Nut	1	10,15	74F	I40-409	Back Up Ring	1	3,85
35	I40S-306	Lock Nut	1	26,6	75FB	I80-422	Back Up Ring	1	2,45
36	00-2348	Ball Bearing	1	26,95	✳	IS50SRK	Repair kit :Index No-		22,05
37	I40S-302	Cylinder	1	135,1			7(2);8(2);12;17(2);30C(2);74F		0
38	00-3324	Spring Pin	1	0,7	✳	IS50SSK	Service kit :Index No-		460,25
39	00-3326	Spring Pin	1	0,7			13;14FA;15B(2);16B(2);28F;		0
40	I40S-303	Rotor	1	63			41(9);51;65;66;67		0
41	I40S-304	Rotor Blade	9	10,85	✳	01-0508B	Impulse Oil(100c.c)		35
42	I50S-305	Rear Plate	1	52,85	✳	01-0507B	Impulse Oil(1000c.c)		315
★Pulse unit includes:Index No :									836,15
6,7,8,9,10,11F,12,13,14FA,15B,16B,17,18B,19FB,20F,21,22,23F,24,25C,26,27,28F,30C,31C,34,72C,73C,74F,75FB									