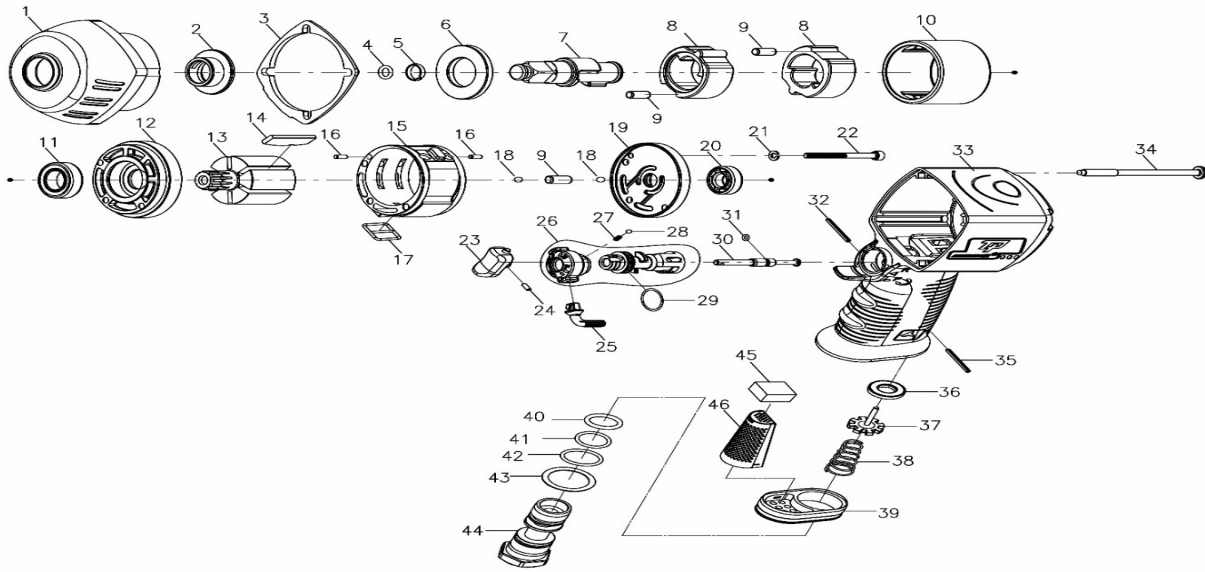


1/2" PROFESSIONAL AIR IMPACT WRENCH



Index No.	Part No.	Description	Q'ty	Index		Part No.	Description	Q'ty	USD
				USD	No.				
1	2224-002	Hammer Case	1	\$15.00	26	243Q-034B	F/R Lever	1	#REF!
2	243Q-010	Anvil Bushing	1	\$7.80		243D-021	R/F Valve(incl. F/R lever)	1	\$15.00
3	2224-020	Front Gasket	1	\$1.20	27	305Y-027	Spring	1	\$1.20
4	00-4103	O-Ring(P7)	1	\$0.60	28	00-3816	Steel Ball(ψ2.5)	1	\$1.20
5	250-033	Anvil Collar	1	\$0.60	29	00-41175	O-Ring(ψ13×ψ1.5)	1	\$1.20
6	243Q-019	Hammer Cage Cover	1	\$6.60	30	243Q-029	Trigger pin	1	\$2.40
7	243Q-011NA4	Anvil	1	\$25.20	31	00-4190	O-Ring(ψ4×ψ1)	1	\$1.20
8	243Q-017	Hammer	2	\$13.20	32	00-3351	Spring Pin(ψ2×24L)	1	\$1.20
9	00-3480	Pin(ψ6×10L)	3	\$0.60	33	2224-001	Motor Housing	1	\$54.00
10	2224-012	Hammer Cage	1	\$23.40	34	2224-028	Screw	4	\$1.20
11	00-2349	Ball Bearing(6902ZZ)	1	\$2.40	35	00-3308	Spring Pin(ψ3×18L)	1	\$0.60
12	2224-005	Front End Plate	1	\$7.80	36	243D-024	Bushing	1	\$1.20
13	2224-007	Rotor	1	\$17.40	37	243D-025	Valve Stem	1	\$2.40
14	2224-008D	Rotor Blade	6	\$1.80	38	2224-027	Spring	1	\$1.20
15	2224-006	Cylinder	1	\$48.00	39	305-021	Exhaust Deflector	1	\$1.20
16	00-3419	Pin(ψ3×6L)	2	\$0.60	40	00-4152	O-Ring (ψ13.8×ψ2.4)	1	\$1.20
17	243D-030	Square Ring	1	\$0.60	41	00-41204	O-Ring (ψ14×ψ1.78)	1	\$1.20
18	00-3824	Steel Ball(ψ4)	2	\$0.60	42	00-4121	O-Ring (ψ15×ψ1.5)	1	\$1.20
19	2224-009	Rear End Plate	1	\$9.60	43	305F-032	Washer	1	\$1.20
20	00-2326	Ball Bearing(6900)	1	\$4.80	44	243D-026A	Air Inlet (1/4" PF)	1	\$0.00
21	00-1809	Spring Washer(M4)	3	\$1.20					\$8.40
22	00-0165	Cap Screw(M4x35L)	3	\$1.20					\$0.00
23	243Q-023	Trigger	1	\$2.40	45	306-035	Muffler	1	\$1.20
24	00-3325	Spring Pin(ψ2×6L)	1	\$1.20	46	305F-042	Muffler	1	\$1.80
25	243Q-035B	Tab	1	\$1.20					