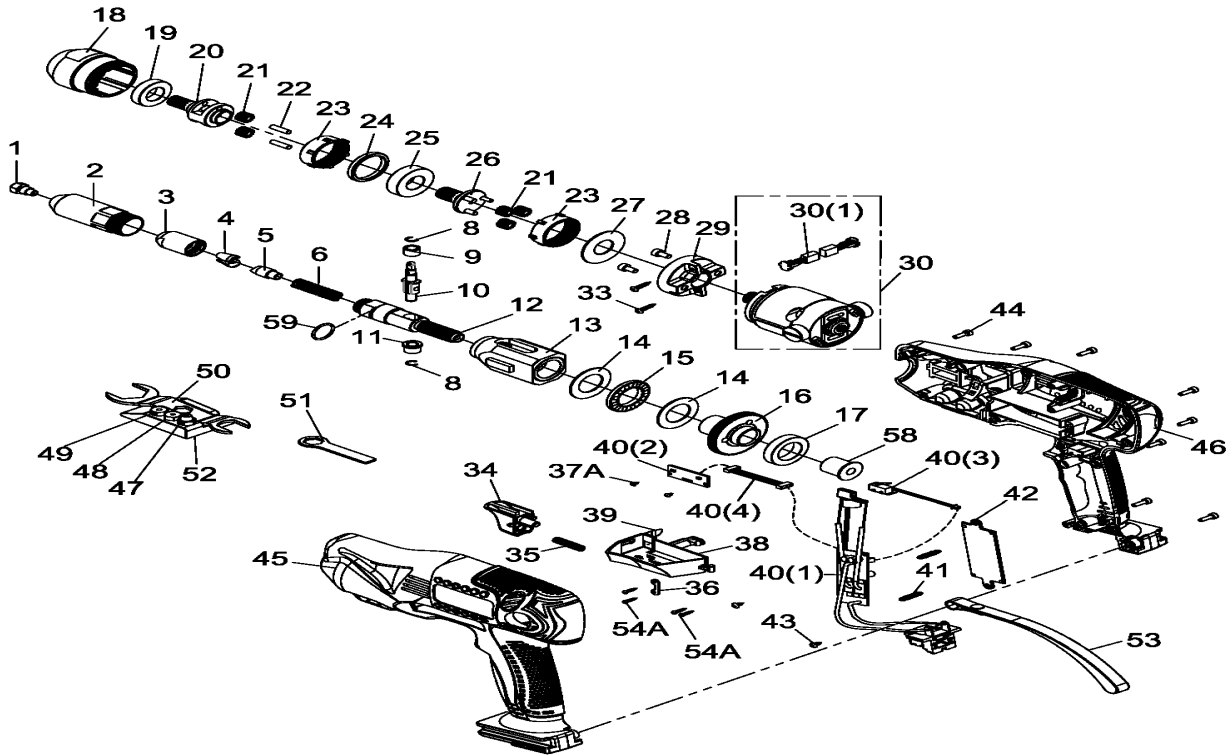


# OPT-P 5170R (Ø2.4~Ø4.8)



Index No	Part No.	Description	Q'ty	fiyat		Index No	Part No.	Description	Q'ty	fiyat																										
1	D28R1144B-3	Nosepiece 3/16" (4.8mm)	1		\$3,00	33	000-0930	Screw (φ 3x14L)	2		\$1,20																									
2	D42R1144B	Head	1		\$38,40	34	C09R1144B # R1	Trigger	1		\$2,40																									
3	D42R1144B-1	Jaw-Housing	1		\$46,80	35	D48R1144B-1	Spring	1		\$1,20																									
4	D49R1144B-2	Jaws (two-parts)	2		\$3,60	36	D03R1144B	Spacer	1		\$1,20																									
5	D55R1144B	Jaw-Pusher	1		\$2,40	37A	000-0821	Screw (φ 2x6L)	2		\$1,20																									
6	D48R1144B	Spring	1		\$1,20	38	C03R1144B	Mandrel Collection Box	1		\$3,00																									
8	000-2925	Snap Ring	2		\$1,20	39	D47R1144B	Slice	1		\$2,40																									
9	D42R1144B-4	Bushing	1		\$13,20	<table border="1" style="width: 100%; border-collapse: collapse;"> <tr> <td rowspan="5" style="text-align: center; vertical-align: middle;">40</td> <td>B76R1144B-1</td> <td>Circuit Board Assembly</td> <td>1</td> <td></td> <td>\$504,00</td> </tr> <tr> <td>B76R1144B</td> <td>(1)Circuit Board</td> <td>1</td> <td></td> <td>\$468,00</td> </tr> <tr> <td>E76R1144B-1</td> <td>(2)Sensor Board</td> <td>1</td> <td></td> <td>\$19,20</td> </tr> <tr> <td>E76R1144B-2</td> <td>(3) Switch Assembly</td> <td>1</td> <td></td> <td>\$8,40</td> </tr> <tr> <td>E86R1144B</td> <td>(4) Connector Wire</td> <td>1</td> <td></td> <td>\$6,60</td> </tr> </table>					40	B76R1144B-1	Circuit Board Assembly	1		\$504,00	B76R1144B	(1)Circuit Board	1		\$468,00	E76R1144B-1	(2)Sensor Board	1		\$19,20	E76R1144B-2	(3) Switch Assembly	1		\$8,40	E86R1144B	(4) Connector Wire	1		\$6,60
40	B76R1144B-1	Circuit Board Assembly	1		\$504,00																															
	B76R1144B	(1)Circuit Board	1		\$468,00																															
	E76R1144B-1	(2)Sensor Board	1		\$19,20																															
	E76R1144B-2	(3) Switch Assembly	1		\$8,40																															
	E86R1144B	(4) Connector Wire	1		\$6,60																															
10	B43R1144B	Slip Roller Assembly	1		\$48,00	41	C07R1144B	Interval pillar	2		\$1,20																									
11	D39R1144B-3	Bushing	1		\$14,40	42	D80R1144B	Plates	1		\$3,60																									
12	D43R1144B	Transmission	1		\$57,60	43	000-0831	Screw (φ 3x8L)	2		\$1,20																									
13	B27R1144B	Transmission Housing Assembly	1		\$117,60	44	000-0230	Screw (φ 3x10L)	13		\$1,20																									
14	D39R1144B-2	Washer	2		\$2,40	45	B02R1144B-1 # B1	Housing Lower Cover Assembly	1		\$48,00																									
15	000-2521	Thrust Bearing	1		\$27,60	46	B01R1144B-1 # B1	Housing Upper Cover Assembly	1		\$48,00																									
16	D49R1144B-3	Power Transfer Gear	1		\$54,00	47	D28R1144B	Nosepiece 3/32" (2.4mm)	1		\$3,00																									
17	000-2318	Ball Bearing	1		\$8,40	48	D28R1144B-1	Nosepiece 1/8" (3.2mm)	1		\$3,00																									
18	D50R1144B	Gear Box	1		\$16,80	49	D28R1144B-2	Nosepiece 5/32" (4.0mm)	1		\$3,00																									
19	000-2338	Ball Bearing	1		\$38,40	50	D34R1144B-1	3 in 1 Wrench	1		\$4,80																									
20	D51R1144B-1	Gear Cage	1		\$39,60	51	D34R1144B	Wrench	1		\$2,10																									
21	D49RW120ZA-4	Planet Gear	5		\$6,60	52	C38R1144B # B1	Wrench Place	1		\$9,24																									
22	000-3442	Pin	2		\$1,20	53	D40W192B # B1	Lanyard	1		\$4,20																									
23	D49R1144B-1	Gear Ring	2		\$5,40	54A	000-0822	Screw (φ 2x10L)	4		\$1,20																									
24	D39R1144B-1	Ring	1		\$5,40	58	D42R1144B-3	Bushing	1		\$12,00																									
25	000-2325	Ball Bearing	1		\$7,20	59	000-4110	O-Ring (φ 16xφ 1.5)	1		\$1,20																									
26	B51R1144B	Pin Cage Assembly	1		\$33,60	<table border="1" style="width: 100%; border-collapse: collapse;"> <tr> <td>30</td> <td>B83R1144B-1</td> <td>Motor Assembly</td> <td>1</td> <td></td> <td>\$182,40</td> </tr> <tr> <td></td> <td>D15W1144B</td> <td>(1)Carbon Brush</td> <td>2</td> <td></td> <td>\$6,60</td> </tr> </table>					30	B83R1144B-1	Motor Assembly	1		\$182,40		D15W1144B	(1)Carbon Brush	2		\$6,60														
30	B83R1144B-1	Motor Assembly	1		\$182,40																															
	D15W1144B	(1)Carbon Brush	2		\$6,60																															
27	D39R1144B	Washer	1		\$2,10																															
28	000-0242	Screw (M4x8L)	2		\$1,20																															
29	D52R1144B	Motor Holder	1		\$12,00																															
30	B83R1144B-1	Motor Assembly	1		\$182,40																															
	D15W1144B	(1)Carbon Brush	2		\$6,60																															

★ The easily worn parts highlighted in blue.